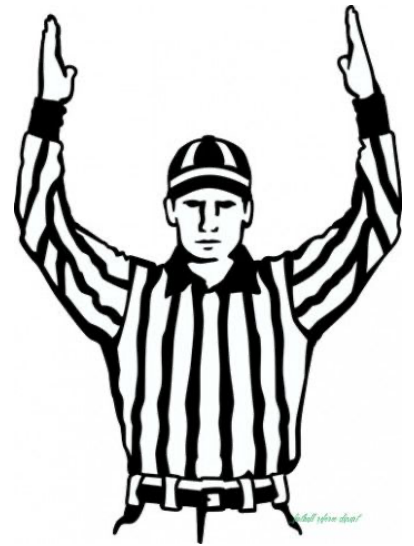


SPELLING WORDS

For the Week of:

Nov. 29th - Dec. 3rd



Spelling Focus: Long i: i, i-C-e, y, igh, ey, uy

- | | | | |
|------------|------------|------------|-----------|
| 1. eyes | 2. icicle | 3. tight | 4. climb |
| 5. umpire | 6. highway | 7. idea | 8. title |
| 9. flight | 10. cycle | 11. fright | 12. iron |
| 13. slight | 14. tiny | 15. higher | 16. shy |
| 17. hire | 18. buy | 19. might | 20. reply |

Challenge Words

- | | |
|-----------------------|----------------------------|
| 1. Liturgical Year | 2. Advent Wreath |
| 3. Corps of Discovery | 4. Corporal Works of Mercy |

At least one challenge word is required

