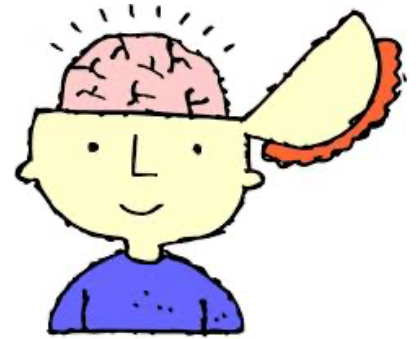




# SPELLING WORDS

For the Week of:

October 19-23



Spelling Focus: Long a: a, ai, ay

- |            |            |             |            |
|------------|------------|-------------|------------|
| 1. aim     | 2. holiday | 3. paper    | 4. station |
| 5. able    | 6. crayon  | 7. flavor   | 8. lazy    |
| 9. brain   | 10. anyway | 11. remain  | 12. favor  |
| 13. rail   | 14. taste  | 15. trailer | 16. lady   |
| 17. nation | 18. relay  | 19. fail    | 20. radio  |

## Challenge Words

- |                   |                  |
|-------------------|------------------|
| 1. idiosyncrasy   | 2. reverence     |
| 3. hyperbole      | 4. Temporal Lobe |
| 5. Occipital Lobe |                  |

At least one challenge word is required